

EWMS1000 Wireless Media Streamer
Version: 1.1.2
Release Notes
February 01, 2006

=====
This document outlines:

1. EWMS1000 Firmware Version
2. How to upgrade
3. Enhancements/Bugs Fixes/Known Issues

=====
EWMS1000 Firmware information
=====

This release contains the following versions:

Firmware
Transmitter Ver: 1.1.2
Receiver Ver: 1.1.2

This release contains the following files:

- | | |
|-------------------------|--|
| 1. EWMS1000_Upgrade.exe | EWMS1000 firmware upgrade |
| 2. Files.txt | file containing names of the upgrade files |
| 3. Tx_1_1_2.s37 | transmitter upgrade firmware |
| 4. Rx_1_1_2.s37 | receiver upgrade firmware |
| 5. Release Notes.txt | this file |

=====
How to upgrade EWMS1000 Wireless Video Extender
=====

This section offers abbreviated installation instructions. For more details, refer to the section entitled USING THE UPGRADE TOOL at the end of this file.

1. Obtain the latest FL0494001.zip file from www.avocent.com
2. Unzip the file to a directory
3. Connect a serial cable to either Tx/Rx and apply power to Tx/Rx. Wait for amber lights to stop alternating on/off.
3. Press and hold the SW2 button until far the right green light flashes. This will put the unit in program mode.
4. From the Unzip directory run EWMS1000_Upgrade.exe
5. From the dialog window select the Program button. The program will determine if it is connected to a transmitter or receiver and download the appropriate software.

6. After the file has been downloaded, do not abort or close the program or disconnect power to the EWMS1000.
7. A "Download Completed" dialog will appear when the file has been downloaded. Select Ok.
8. Disconnect serial cable.
9. Recycle Tx/Rx power.

EWMS1000_Upgrade.exe Notes

When the program button is selected, the currently active firmware revision is displayed. To confirm that the unit has been properly upgraded, follow steps 3 through 5. After the new version is displayed in the window the update program can be aborted.

Enhancements/Bugs Fixes/Known Issues

Audio/video sync across all receivers has been added to this release.

Using the Upgrade Tool

1 Package Contents

The EWMS1000 Upgrade package includes the following files:

EWMS1000Upgrade.exe	– the upgrade tool
file.txt	– contains the name of the 2 firmware files
tx_XXXX.s37	– firmware for the transmitter
rx_XXXX.s37	– firmware for the receiver

1.1 Format of “file.txt”

Should you need to prepare an upgrade package, the format of the file “file.txt” is as follows:

It has 2 lines. Contents, if any, after the first 2 lines are ignored.

The first line lists the transmitter firmware name, followed by a space and the version string.

The second line lists the receiver firmware name, followed by a space and the version number

For example, if the transmitter and receiver firmware are tx_1012.s37 and rx_1012.s37, then the content of *file.txt* is as follows:

```
tx_1012.s37 1.0.12
rx_1012.s37 1.0.12
```

2 Minimum system requirements

To upgrade the EWMS1000 unit you will need at least the following:

- Pentium PC or equivalent
- Windows ® 2000 or Windows XP
- Serial Port
- EWMS1000 serial upgrade cable (supplied with the EWMS1000)

3 Using the tool

3.1 Start

Start the upgrade process by doing the following. The order of the two steps is not important. Either of them can be performed first.

3.1.1 Power On and Connect the Unit

Apply power to the EWMS1000 unit. The unit will initialize, as indicated by a series of blinks of the 2 yellow LEDs. After the initialization is finished, push and hold the SW2 button using a pointed object until the right-most green LED (the LED that is the farthest to the red power LED) blinks by itself.

Next, connect the EWMS1000 unit to a PC COM port.

Use a straight-through serial cable for EWMS1000 transmitters.

Use a NULL modem serial cable for EWMS1000 receivers.

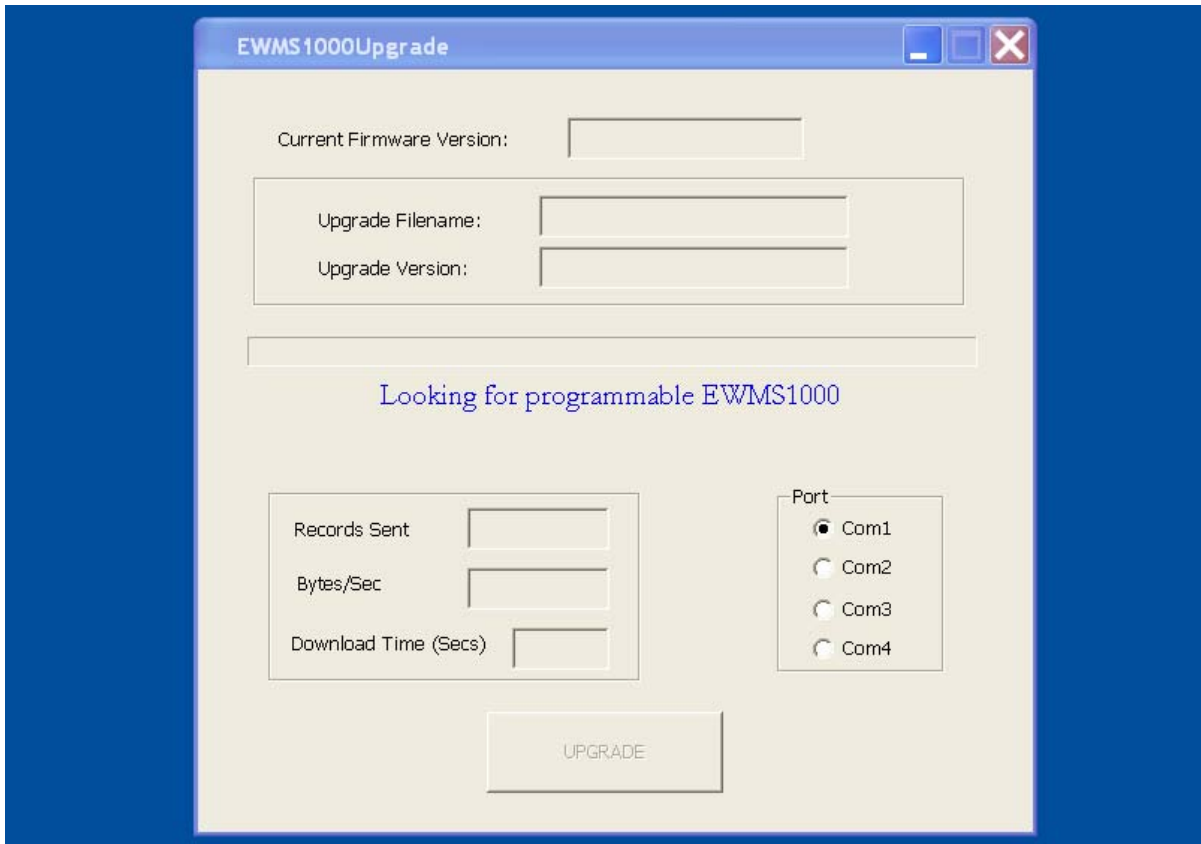
The default serial port settings on the EWMS1000 unit are as follows. The EWMS1000 unit employs an auto-baud algorithm that should recognize and accommodate lower baud rates, if used:

Baud rate	115200
Bits/character	8
Parity	none
Stop bits	1
Flow Control	none

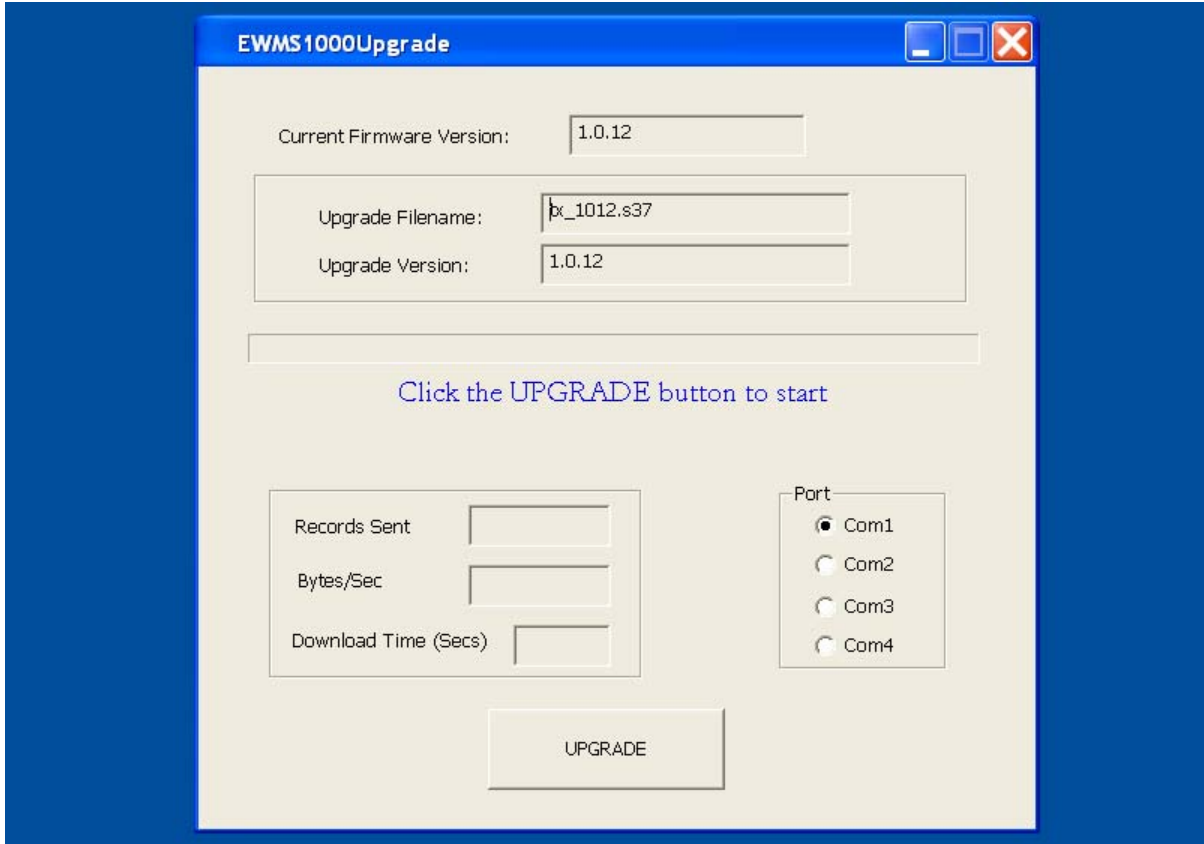
3.1.2 Start the Upgrade Tool

Start the upgrade tool by running the program *EWMS1000Upgrade.exe*.

If you performed this step before connecting the EWMS1000 unit, or the unit is not connected to the COM1 port of the PC, you will see a window similar to the one below:



If the EWMS1000 unit was powered and connected to the PC's COM1 port, then its status will be displayed in the **Current Firmware**, **Upgrade Filename**, and **Upgrade Version** text boxes. In this case, the **UPGRADE** button will be active, as shown below.



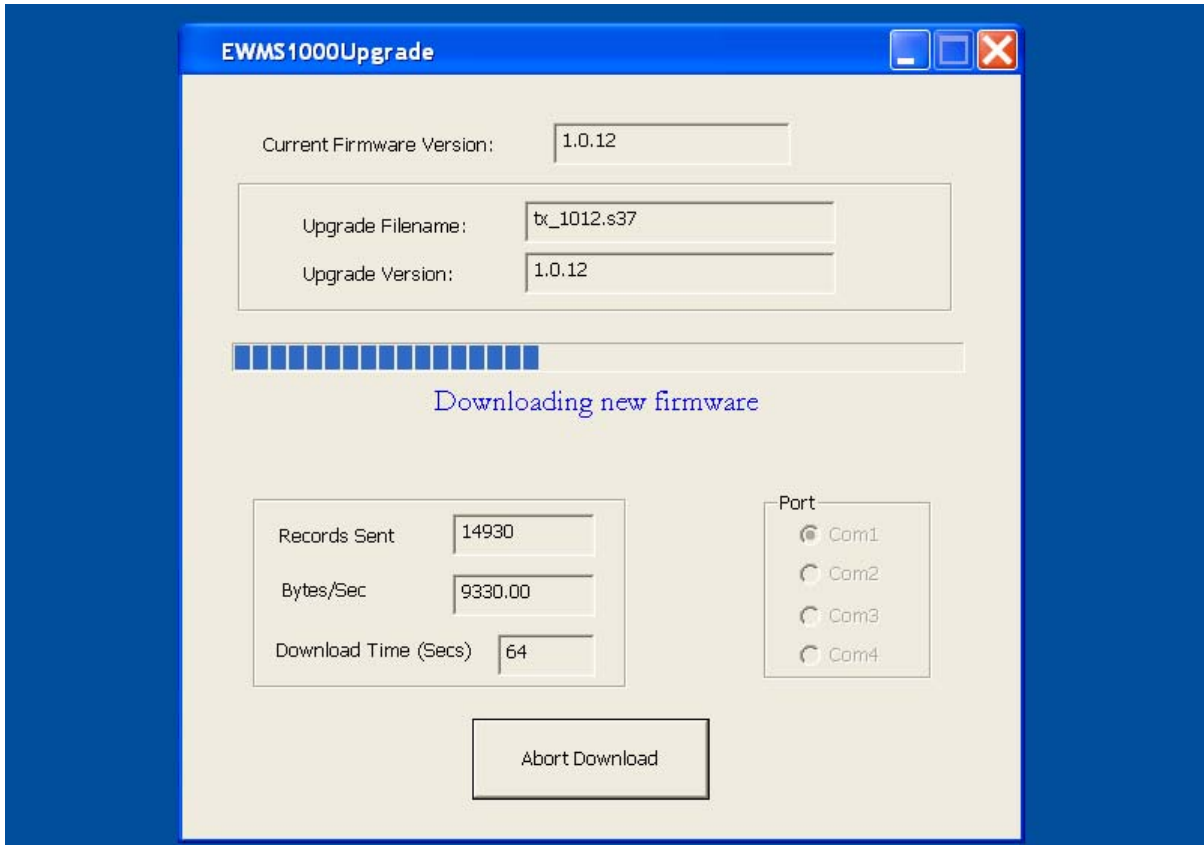
3.2 Select COM Port

By default, the upgrade tool assumes the EWMS1000 unit is connected to the COM1 port of the PC. If that is not the case, the message “*Looking for programmable EWMS1000*”, as shown in the first window above, will not change to “*Click the UPGRADE button to start.*” If this is the case, you may select the appropriate COM port via radio button.

When selecting different COM port, you may see the message “*Error: can not open the COM port*” as shown below. This indicates that either your PC does not have such a COM port as you selected or that port is in use by another program.

3.3 Download the Firmware

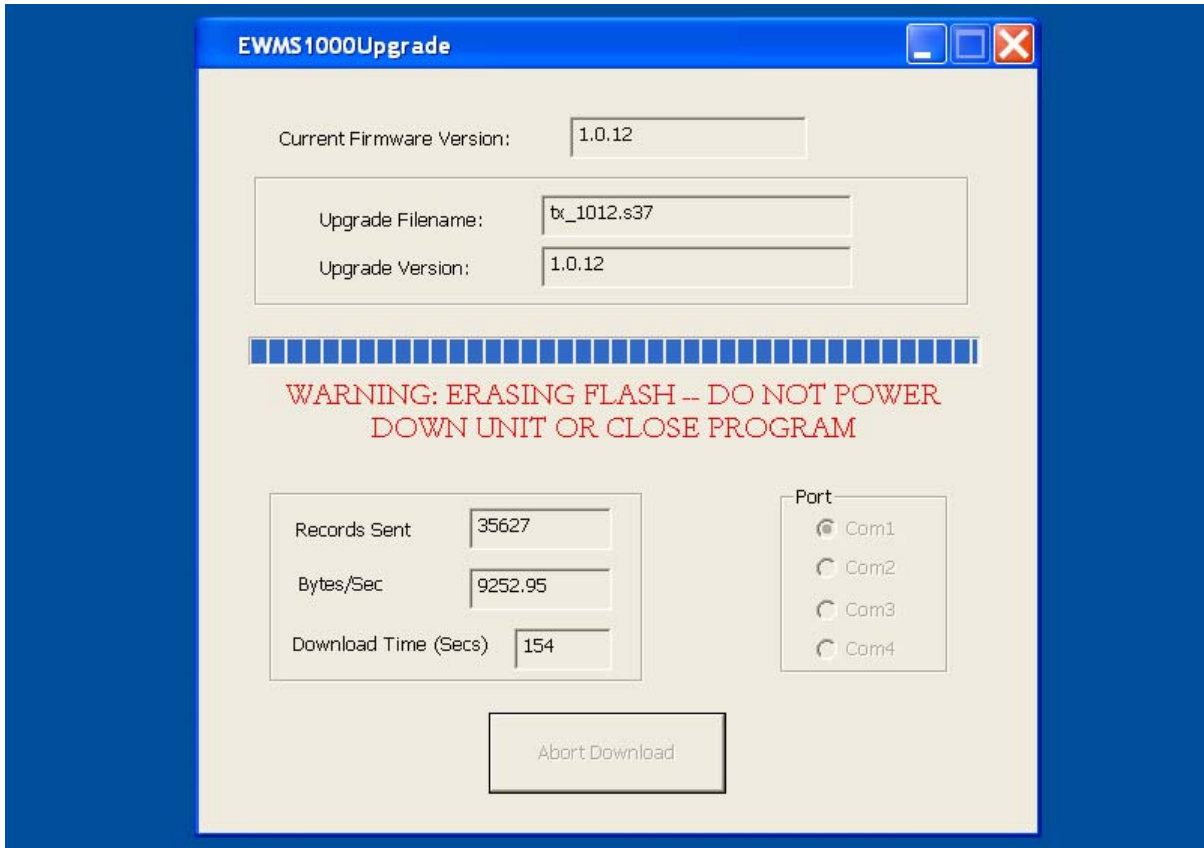
Click the **UPGRADE** button to begin downloading the firmware to the unit. Upgrade status will be displayed, as illustrated below:



Status is updated periodically to indicate the progress of the download process. At this stage, you can abort the whole upgrade process by clicking the **Abort Download** button.

3.4 Firmware Upgrading

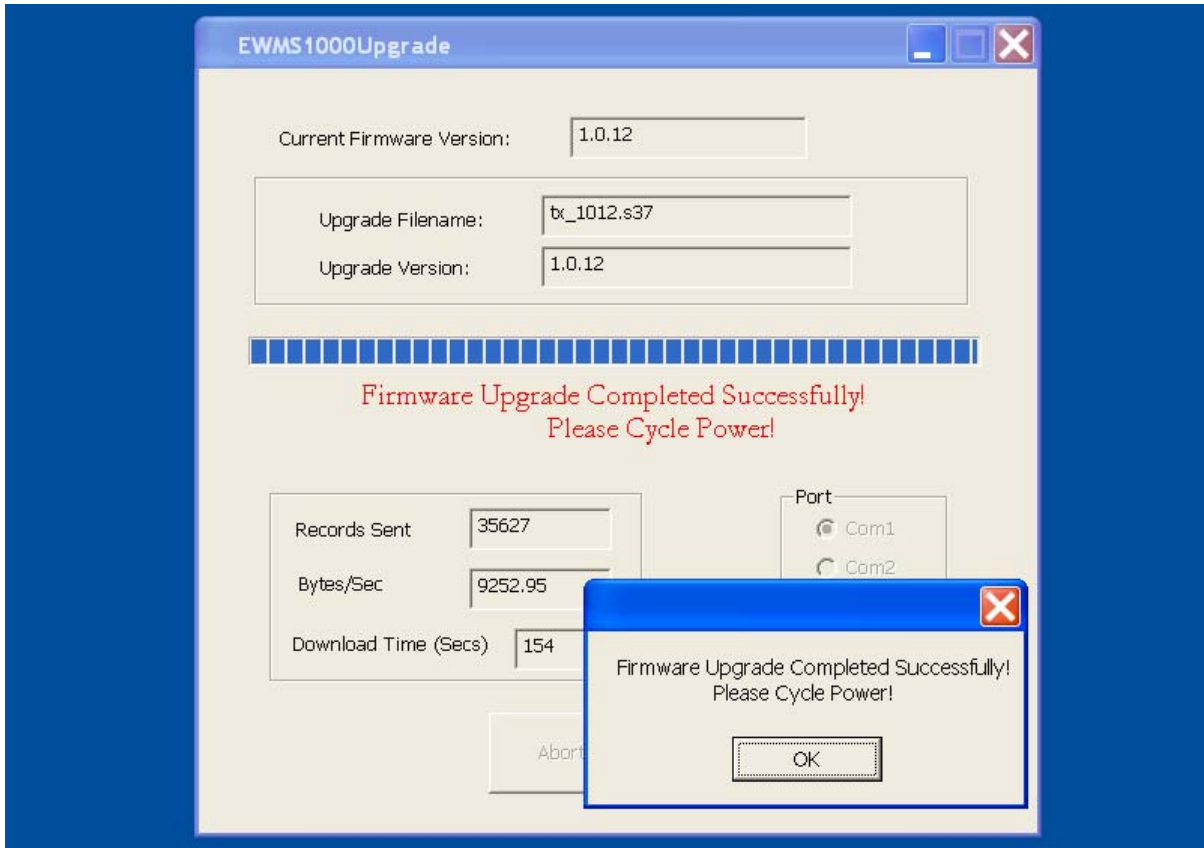
When the entire firmware is downloaded, the unit begins upgrading its firmware through a process of erasing, writing, and verification. During this step, you will see the following window. The red text will blink to remind you not to shut down the upgrade program or power off your unit.



3.5 Upgrade Complete

The window, shown below, will pop up to indicate completion of the upgrade. At this stage, you may disconnect the unit from the PC. After cycling power, the new firmware should be active. You may repeat step 2.1 above to verify the new firmware version.

Note: Until you cycle power on the EWMS1000 unit, the new firmware will not become active.



4 Upgrade Another Unit

To upgrade another unit, unplug the serial cable for the current unit and repeat the steps in Section 3 above, however, you may skip step 3.1.2 and continue use the current session of the upgrade tool *EWMS1000Upgrade.exe*.